

# Information Security Guide for Small Businesses Mobile Device Security



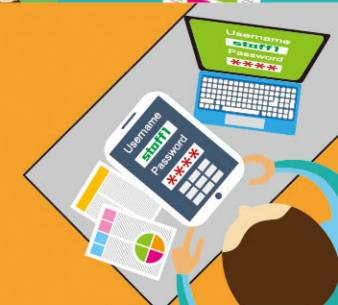
Define a usage policy  
for mobile devices

Enable anti-malware  
protection on  
mobile devices



Restrict mobile devices  
to access corporate data

Enforce authentication when  
accessing corporate services



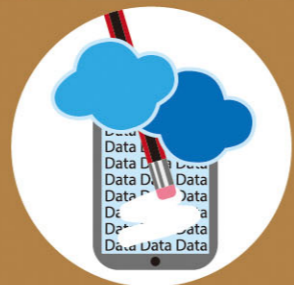
Encrypt the data on the  
mobile devices

Provide IT security  
awareness training  
to staff



Enforce strong passwords  
and screen lock feature  
on mobile devices

Set up firewall on the  
corporate network for  
mobile devices



Enforce mobile devices to  
install remote wipe application

Prohibit "jailbreaking" or  
"rooting" mobile devices



INFOSEC  
Office of the Government  
Chief Information Officer



Hong Kong Computer  
Emergency Response Team  
Coordination Centre



Hong Kong Police Force

For details, please visit the InfoSec website at:  
[www.infosec.gov.hk](http://www.infosec.gov.hk)